



The 6" Architectural canless downlight is a recessed retrofit solution that has an integrated LED power supply. Spring installation directly in the ceiling without a housing. It is perfect for new construction. It is 5 wattage and 5 CCT selectable to fit most needs.

### FEATURES

- \* Wattage selectable: 12, 16, 22, 26, 30
- \* CCT selectable: 27, 30, 35, 40, 50K
- \* Dimmable with 0-10V
- \* SMD2835 LED's and built-in driver
- \* Power factor >0.90 ; THD: <20%
- \* IP54 rating
- \* Designed with integral whip to connect directly to a junction box; Ideal for installation into existng CFL pin-based fixture infrastructure
- \* Universal voltage AC120V-277V. 50 - 60Hz
- \* Operation temperature of -4 F - 104 F

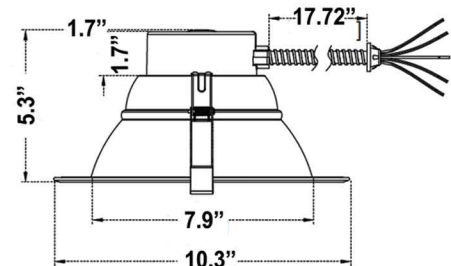
### WARRANTY / LISTING

- \* ETL Listed for wet locations, US & Canada
- \* IC rated for direct contact with insulation (new construction & retrofit).
- \* Five year warranty on all electronics and housing.

### HOUSING

- \* Compatible w/ most 6" architectural housings or frames
- \* Universal Housing Compatibility
- \* Durable thermoplastic and aluminum construction

### DIMENSIONS



### MOUNTING

- \* The adjustable housing clips allow for installation in a large range of commercial and architectural housings. These spring-action clips push up easily and fit securely for both retrofit and new construction installations.



### ORDERING INFORMATION

PART#	LUMENS	WATTS SELECTABLE	LM/W	CCT COLOR TEMPS
DL254-6-30W-A5C5-HO	1320 TO 3600	12/16/22/26/30/	110-120	27,30,35,40,50K